

# Councilors and Officials

## Councilors

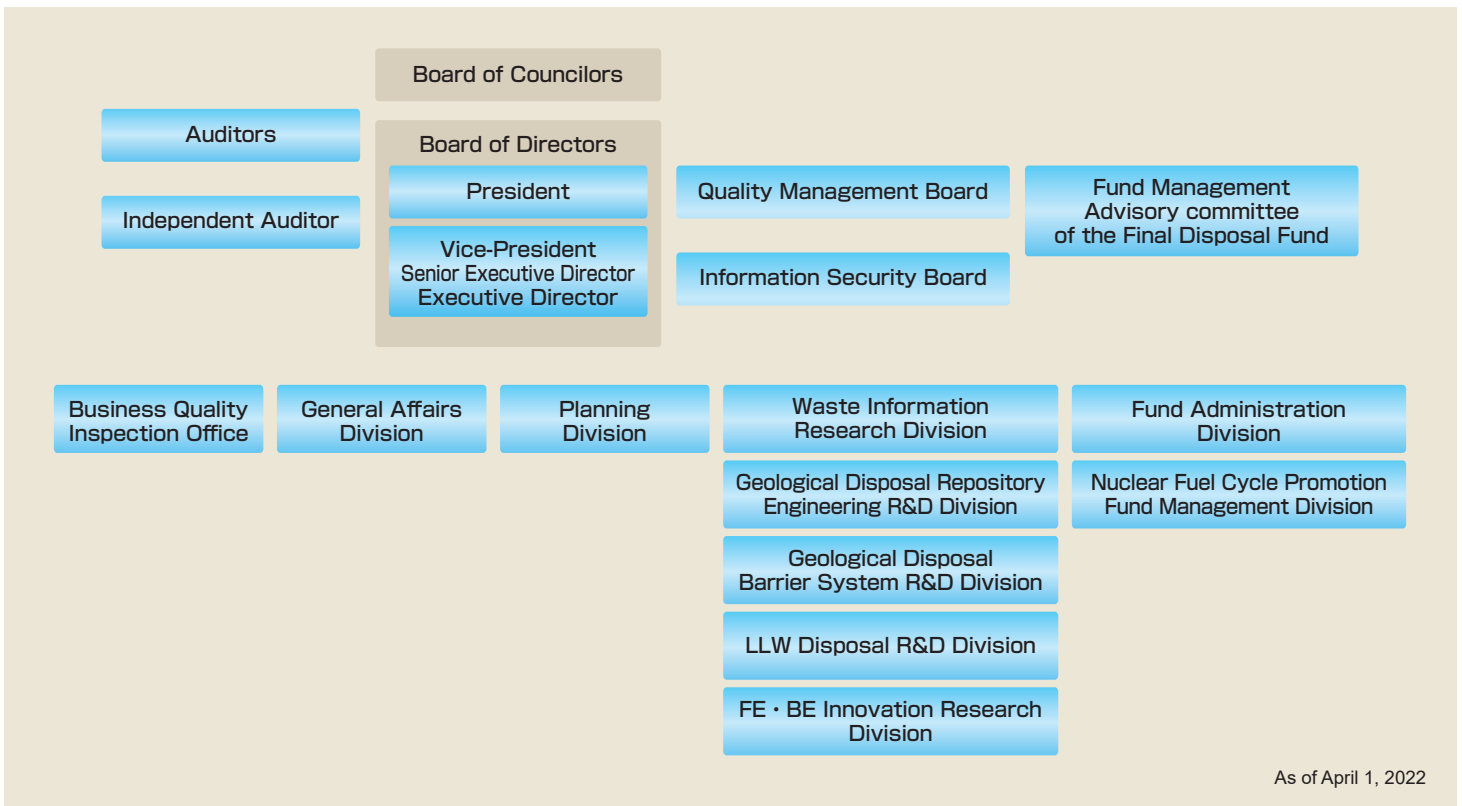
ARAI Shiro	Senior Advisor, Japan Atomic Industrial Forum, Inc.
IHARA Ichiro	Vice-President, Chubu Electric Power Co., Inc.
KONDO Shunsuke	Senior Adviser, Nuclear Waste Management Organization of Japan
MIZUTA Hitoshi	Vice-President, The Kansai Electric Power Co., Inc.
NIIBORI Yuichi	Professor, Department of Quantum Science and Energy Engineering, Graduate School of Engineering, Tohoku University
SATO Seichi	Professor Emeritus, Hokkaido University
SONEDA Naoki	Vice-President, Central Research Institute of Electric Power Industry
TOCHIYAMA Osamu	Technical Adviser, Nuclear Safety Research Association
UCHIYAMA Yoji	Professor Emeritus, University of Tsukuba
WAKASUGI Takaaki	Co-director, Mitsui Life Financial Research Center of Ross Business School at University of Michigan / Professor Emeritus, The University of Tokyo
YANO Shinichiro	Vice-President, Japan Atomic Energy Relations Organization

As of July 1, 2024

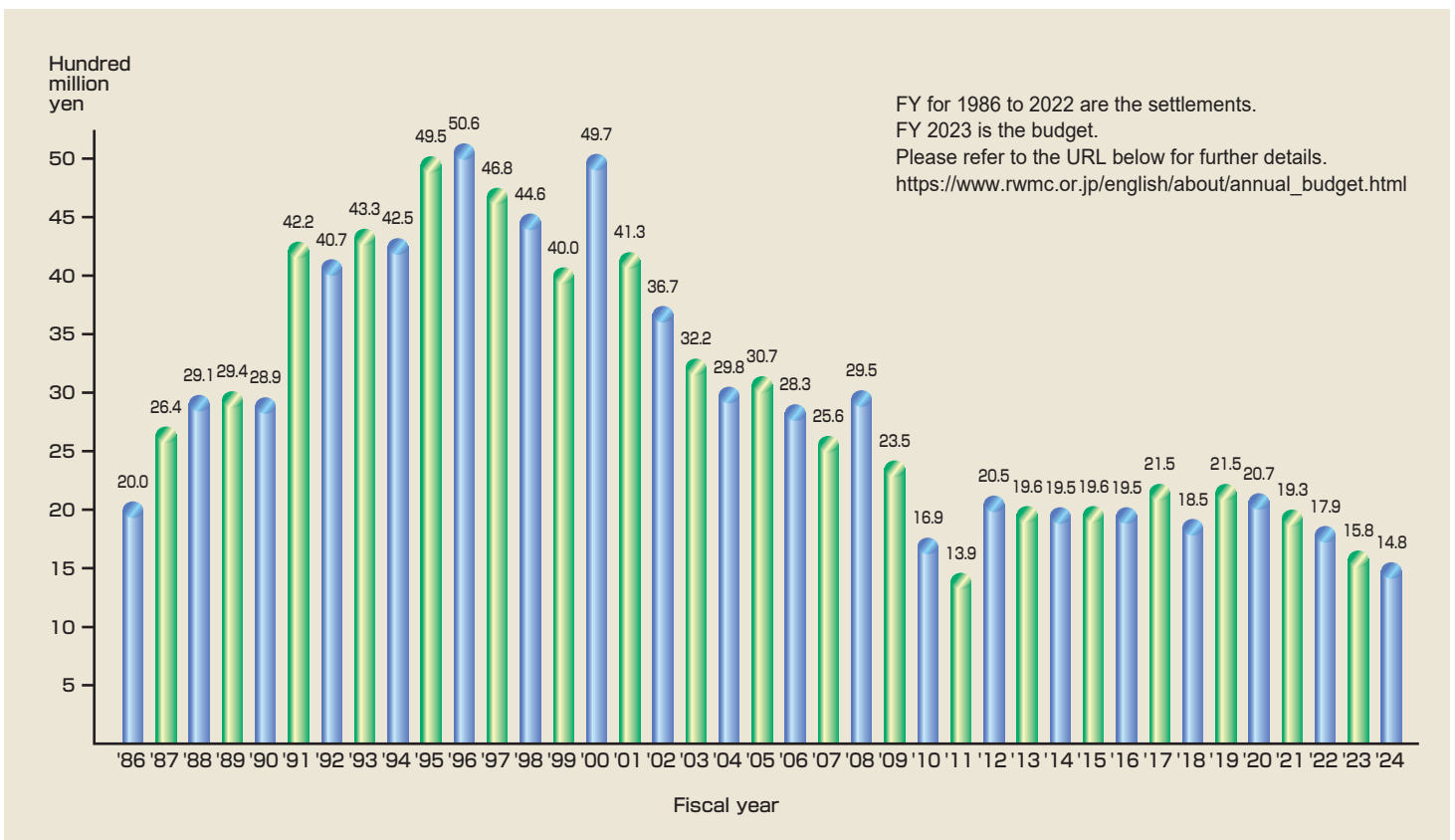
President (full time)	TAKETANI Noriaki	
Vice-President (full time)	FUCHIGAMI Yoshihiro	
Senior Executive Director (full time)	NISHIKAWA Shinya	
Executive Directors (part time)	HARADA Kiyooki	Certified Public Accountant
	IDEMITSU Kazuya	Specially Appointed Professor, International Research Center for Nuclear Materials Science Institute for Materials Research, Tohoku University
	NAGASATO Yoshihiko	Executive Director, Japan Atomic Energy Agency
	NAKAJIMA Tetsuya	President, The Japan Electrical Manufacturers' Association
	NISHIGAKI Makoto	Professor Emeritus, Okayama University
	SASAKI Toshiharu	Vice-Chairman, The Federation of Electric Power Companies of Japan
	TORII Hiroyuki	Ex-Professor, Tokyo Institute of Technology
Auditor (full time)	NOMOTO Takeshi	
Auditor (part time)	MURAMATSU Mamoru	President, The Japan Atomic Power Company

As of July 1, 2024

# Organization



## Annual Budget (Research and Development Division)



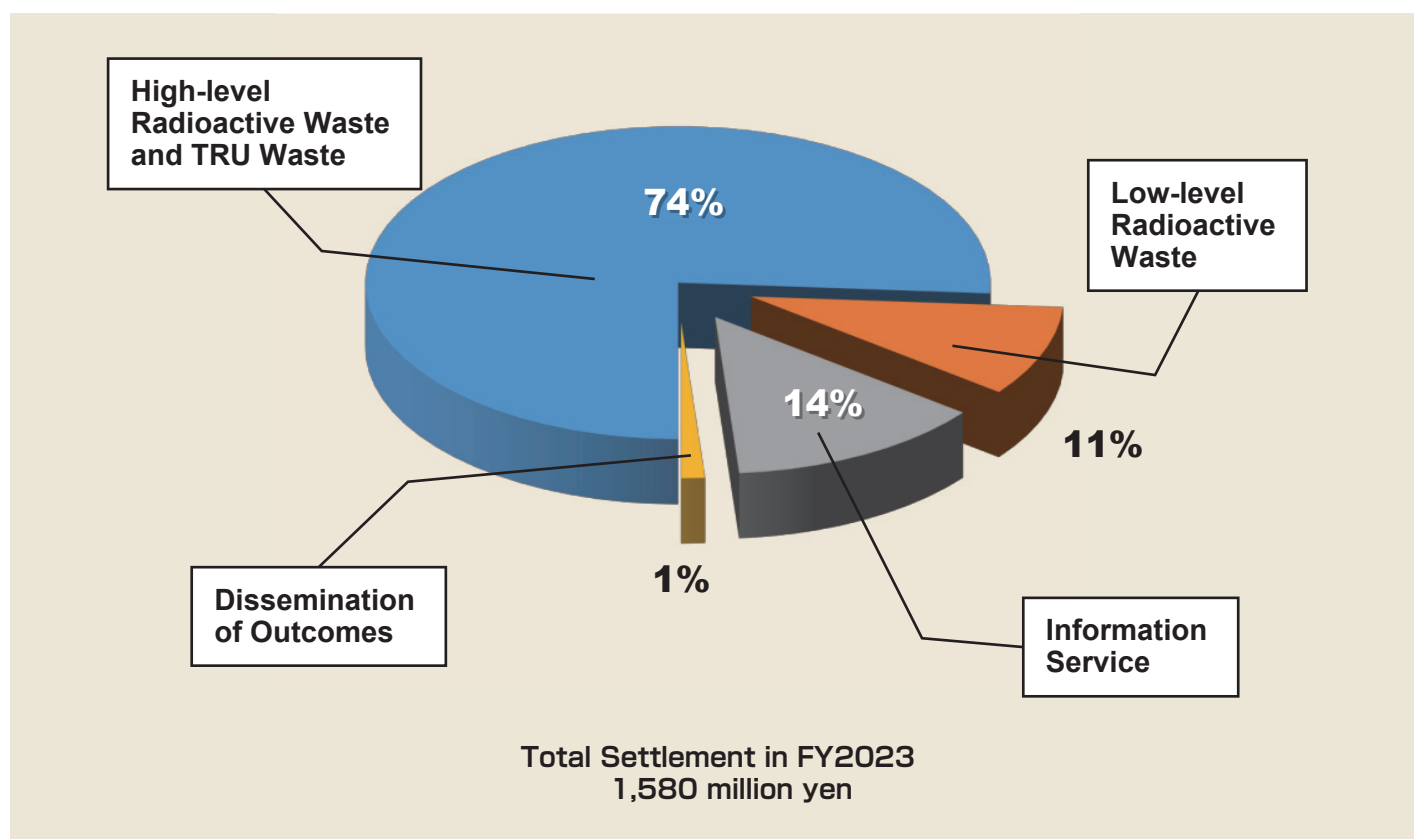
## Activities in FY2023 (Research and Development Division)

- In FY2023, we conducted 22 research and development works for management of all categories of radioactive waste. Sixteen of them were conducted with external funds (Seven from Ministry of Economy, Trade and Industry (METI), nine from the electric utilities and others).
- For dissemination of outcomes and information on radioactive waste management, we conducted organization of lectures·seminars, release of the newest information through our website, publication of RWMC topics and RWMC annual technical report, and contributions to academic conferences and journals.
- We performed information exchange with foreign implementing bodies and research institutes on research and development, safety regulations and standards, and situation of repository programs under the collaboration agreements.

France-ANDRA, Switzerland-NAGRA, Finland-Posiva Oy and Posiva Solutions Oy, Sweden-SKB/SKB International, Germany-BGE and BGE Technology, Spain-ENRESA, Russia-RAS, Belgium-SCK CEN, UK-NDA, Korea-KORAD, China-CNNC/CNUC, Taiwan-NuSTA, Korea-KAERI

(As of July 1, 2024)

## Settlement Distribution by Research Area in FY2023 (Research and Development Division)



# Performance of Fund Administration

## 1-1 Balance of the TypeI Final Disposal Fund

(unit: million yen)

	The End of FY2022	FY2023 (Result)			FY2024 (Plan)		
		Increase	Decrease	The End of FY2023	Increase	Decrease	The End of FY2024
Reserved	1,080,505	59,344		1,139,850	58,348		1,198,198
Reimbursement	93,157		5,365	98,522		7,811	106,333
Interest, etc.	161,776	3,293		165,069	3,778		168,848
Total	1,149,124	62,638	5,365	1,206,398	62,126	7,811	1,260,713

"Type I" is for final disposal of HLW.

"Reimbursement" means the amount paid back to NUMO.

"Increase" includes NUMO's re-reserve.

"Interest, etc." includes interest receivable.

## 1-2 Portfolio of the TypeI Final Disposal Fund

As of March 31, 2024

		Book Value (M¥)	BV Ratio	Face Value (M¥)	Ave. Coupon	Yield
B O N D S	Government	562,762	52.0%	561,100	0.28%	0.24%
	Government Guaranteed	103,830	9.6%	103,900	0.20%	0.28%
	Local Government	184,007	17.0%	184,100	0.23%	0.25%
	Corporate, etc	232,200	21.4%	232,200	0.27%	0.27%
	Total	1,082,800	100.0%	1,081,300	0.26%	0.25%
Deposit		123,258				0.02%
Total Balance		1,206,398				

"Corporate, etc" includes FILP Agency Bonds.

Maturity of the bonds is mainly 10 years.

"Total Balance" includes interest accrued and receivable.

## 1-3 Balance of the TypeII Final Disposal Fund

(unit: million yen)

	The End of FY2022	FY2023 (Result)			FY2024 (Plan)		
		Increase	Decrease	The End of FY2023	Increase	Decrease	The End of FY2024
Reserved	92,821	8,038		100,859	7,944		108,803
Reimbursement	16,558		1,455	18,013		2,091	20,104
Interest, etc.	874	55		929	127		1,056
Total	77,137	8,094	1,455	83,776	8,071	2,091	89,756

"Type II" is for final disposal of TRU waste in geological repository.

"Reimbursement" means the amount paid back to NUMO.

"Increase" includes NUMO's re-reserve.

"Interest, etc." includes interest receivable.

## 1-4 Portfolio of the TypeII Final Disposal Fund

As of March 31, 2024

		Book Value (M¥)	BV Ratio	Face Value (M¥)	Ave. Coupon	Yield
B O N D S	Government	11,619	16.4%	11,600	0.17%	0.13%
	Government Guaranteed					
	Local Government	45,096	63.6%	45,100	0.03%	0.08%
	Corporate, etc	14,200	20.0%	14,200	0.17%	0.17%
	Total	70,916	100.0%	70,900	0.08%	0.11%
Deposit		12,849				0.02%
Total Balance		83,776				

"Corporate, etc" includes FILP Agency Bonds.

Maturity of the bonds is 5 years.

"Total Balance" includes interest accrued and receivable.